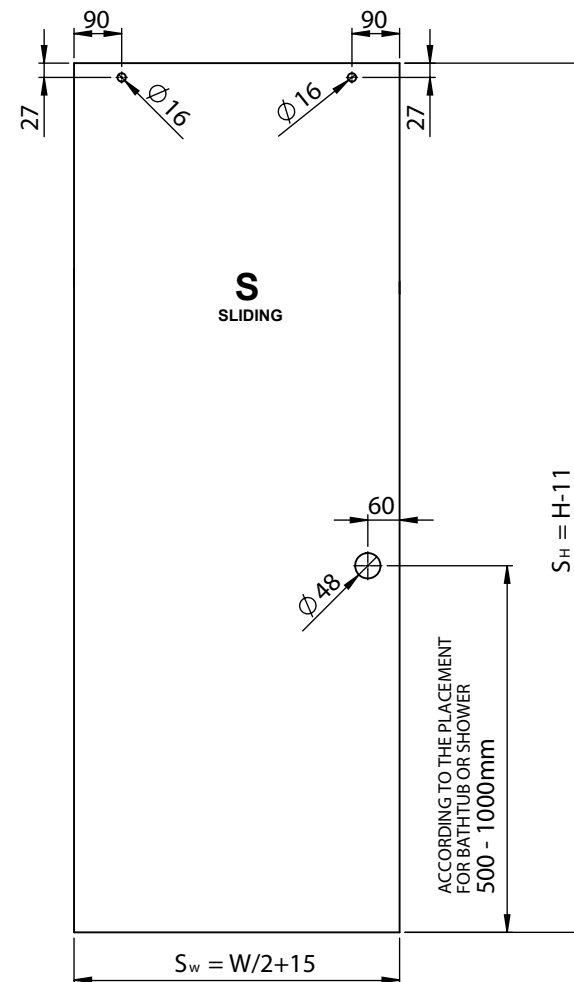
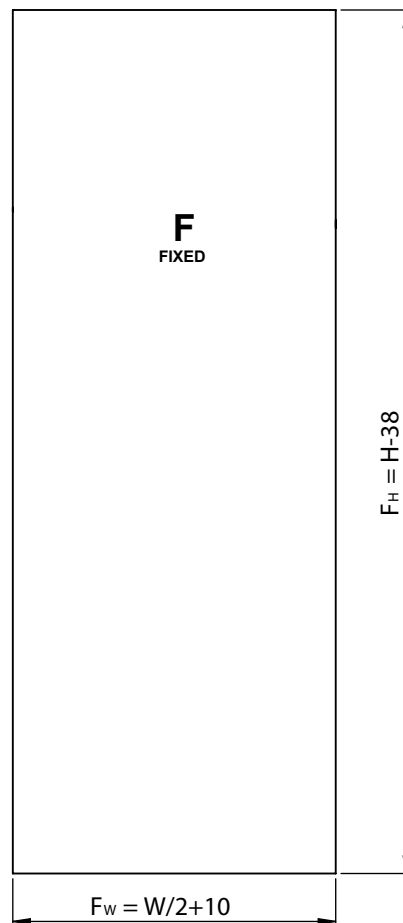
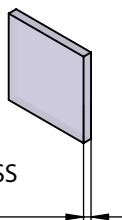


GLASS
THICKNESS
8-10mm

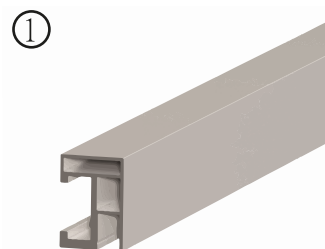
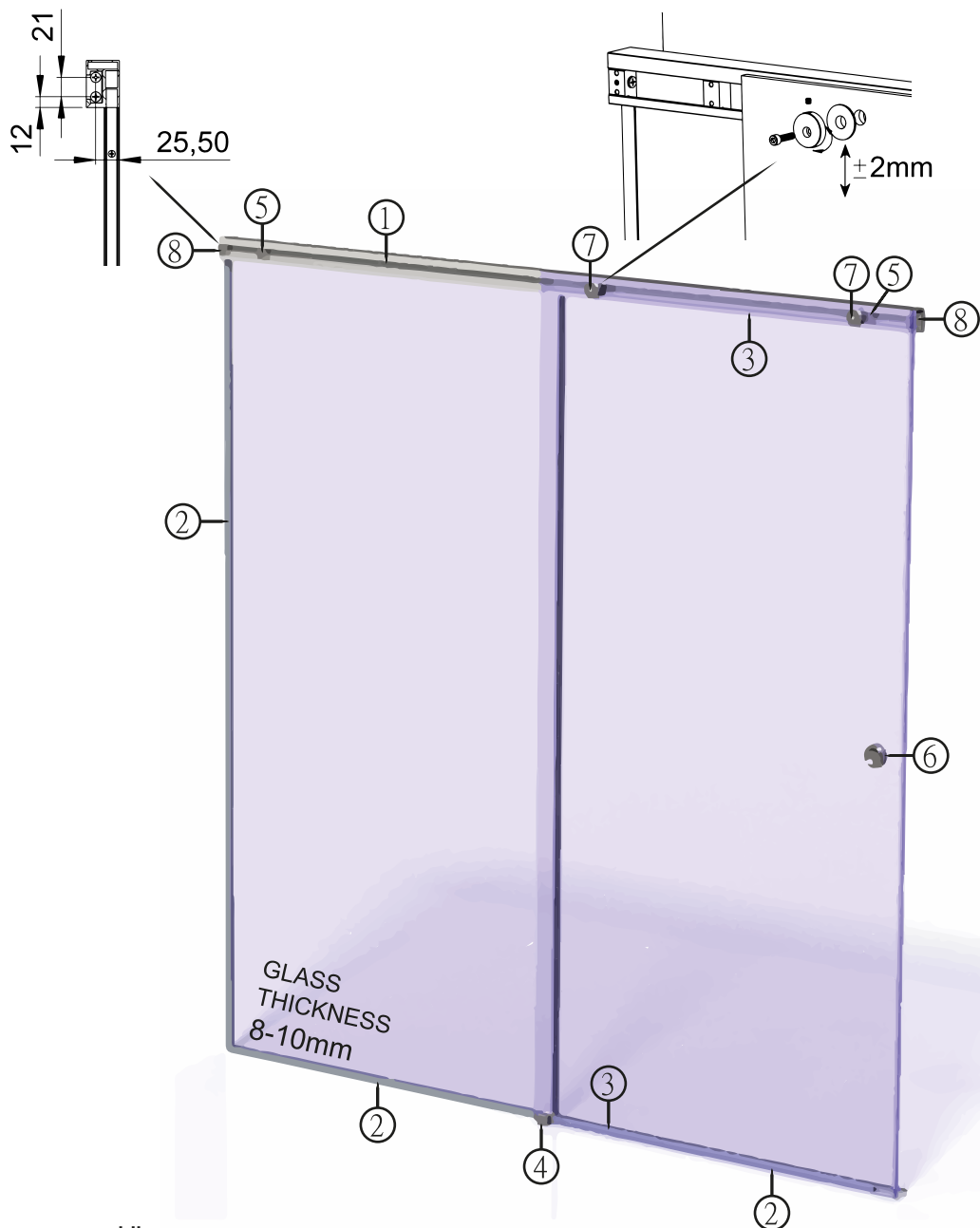


IMPORTANT INSTRUCTIONS

- The gaps have already computed in given dimensions. The glass have space 5mm from the wall and 3mm from the frame.
- Install the silicon sealants to the required edges according to the glass thickness.
- If the glass will ordered with processed surface, careful about the correct side of glass.
- The installation of the showering system require leveled walls and floor.

Shower system in straight line, with one sliding door and one fixed glass panel.

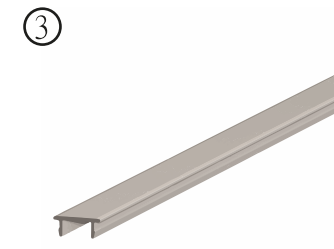
GS-R10



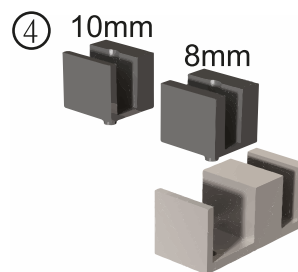
GS-R10-101



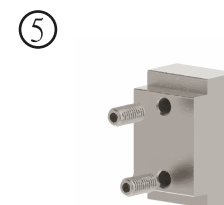
3 x GS-R10-106



2 x GS-R10-105



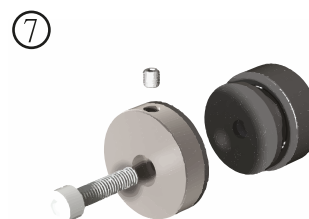
GS-R10-400



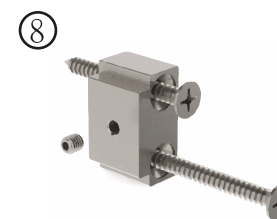
2 x GS-R10-104



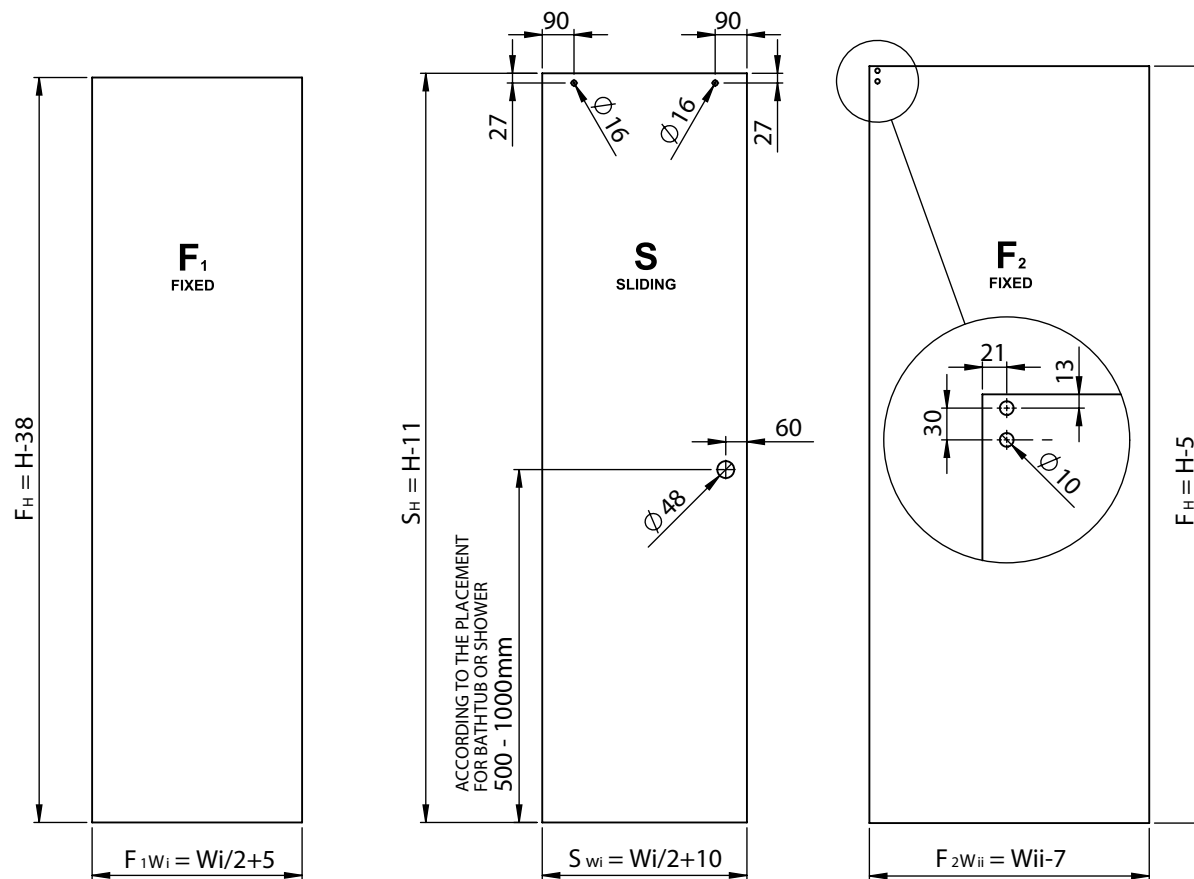
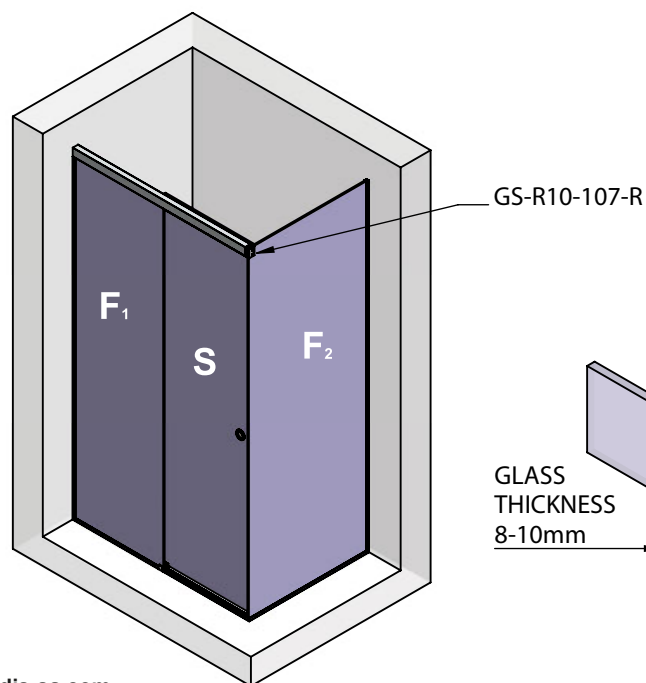
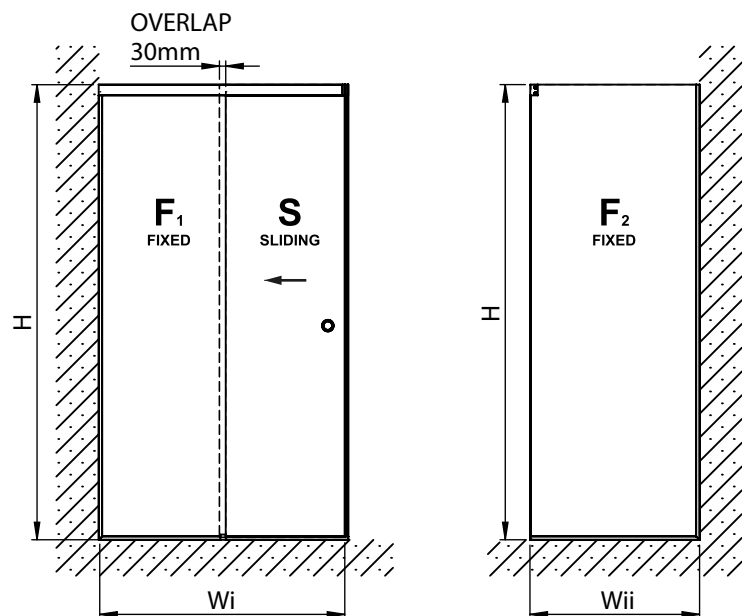
GS-R15



2 x GS-R10-200

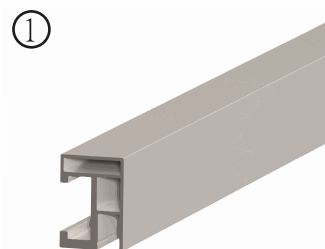
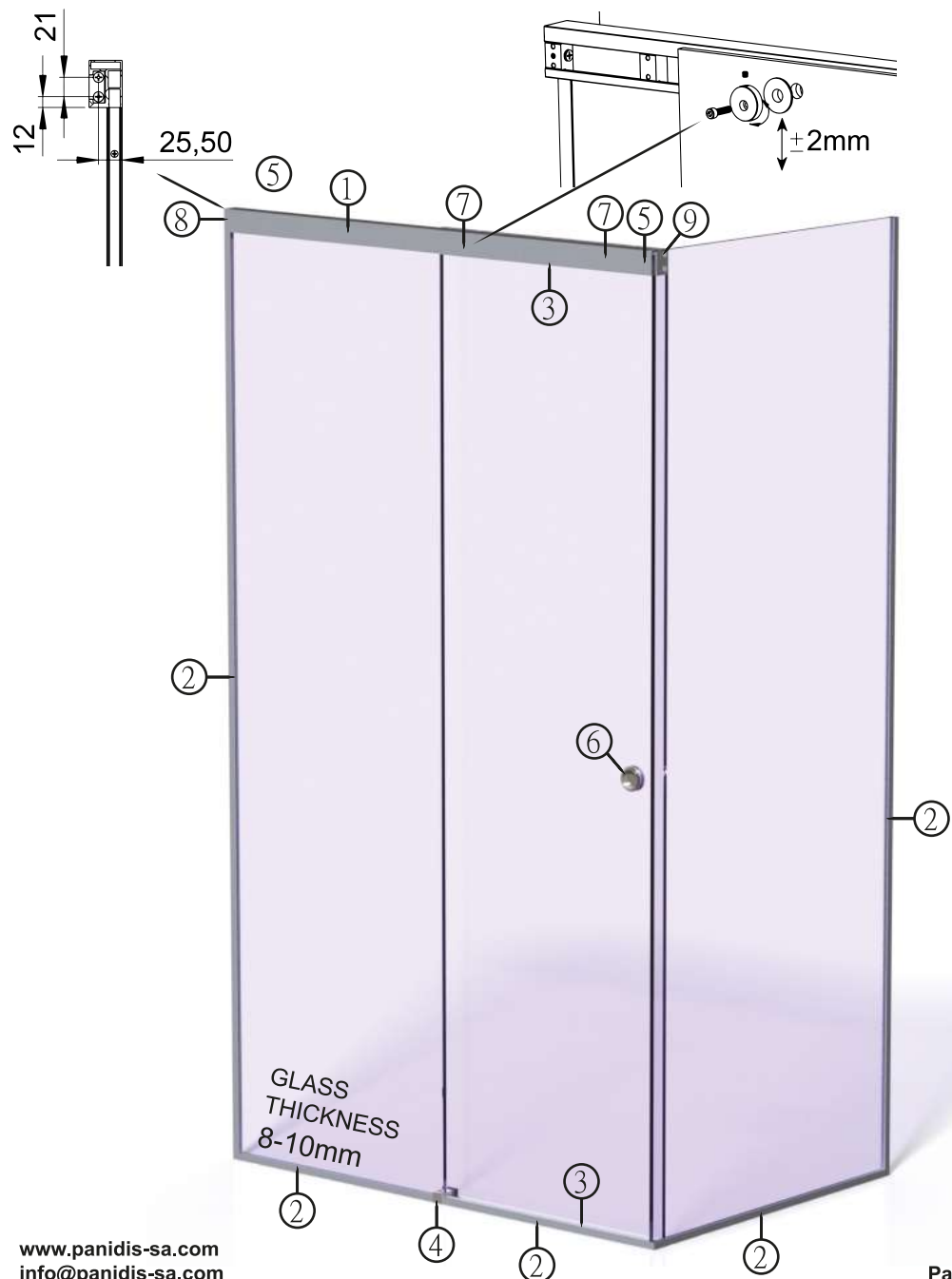


2 x GS-R10-110



IMPORTANT INSTRUCTIONS

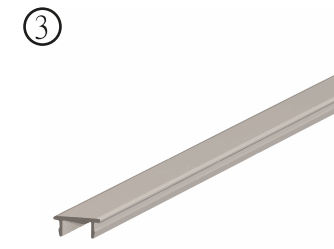
- The gaps have already computed in given dimensions. The glass have space 5mm from the wall and 3mm from the frame.
- Install the silicon sealants to the required edges according to the glass thickness.
- If the glass will ordered with processed surface, careful about the correct side of glass.
- The installation of the showering system require leveled walls and floor.
- Careful about left or right array of the showering system and install the corresponding corner accessory with code GS-R10-107-L or GS-R10-107-R.



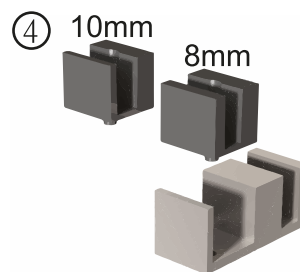
GS-R10-101



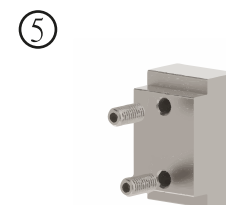
5 x GS-R10-106



2 x GS-R10-105



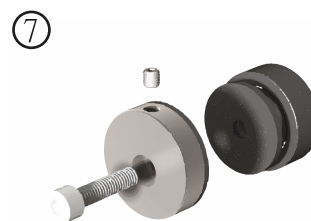
GS-R10-400



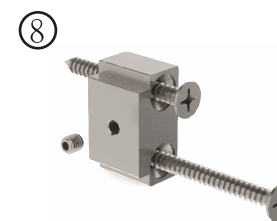
2 x GS-R10-104



GS-R15



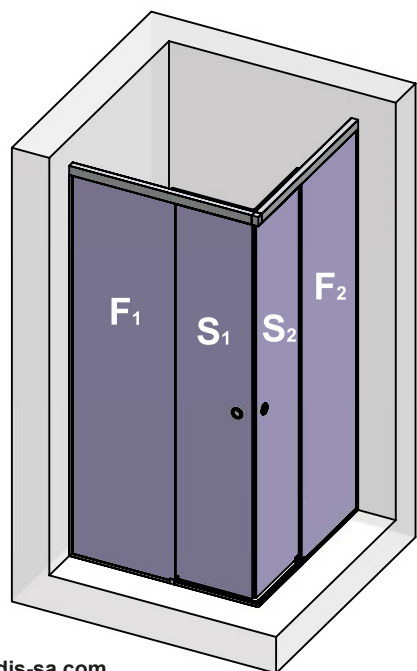
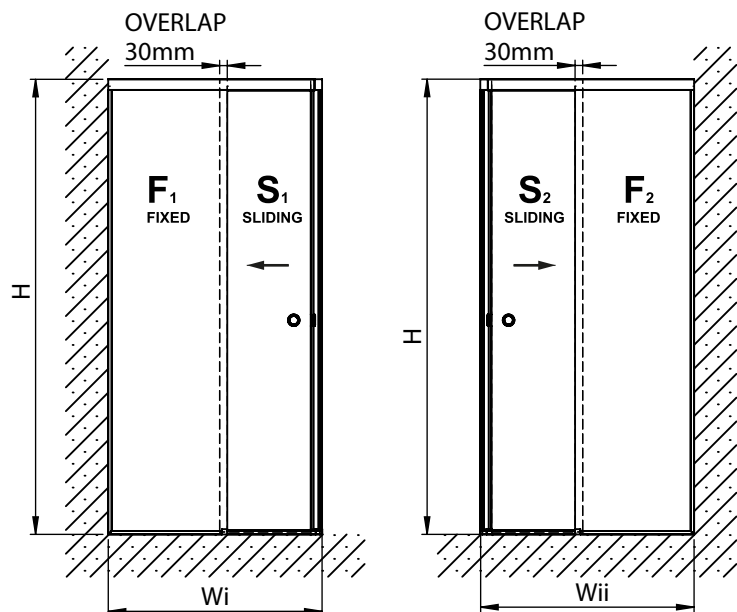
2 x GS-R10-200



GS-R10-110

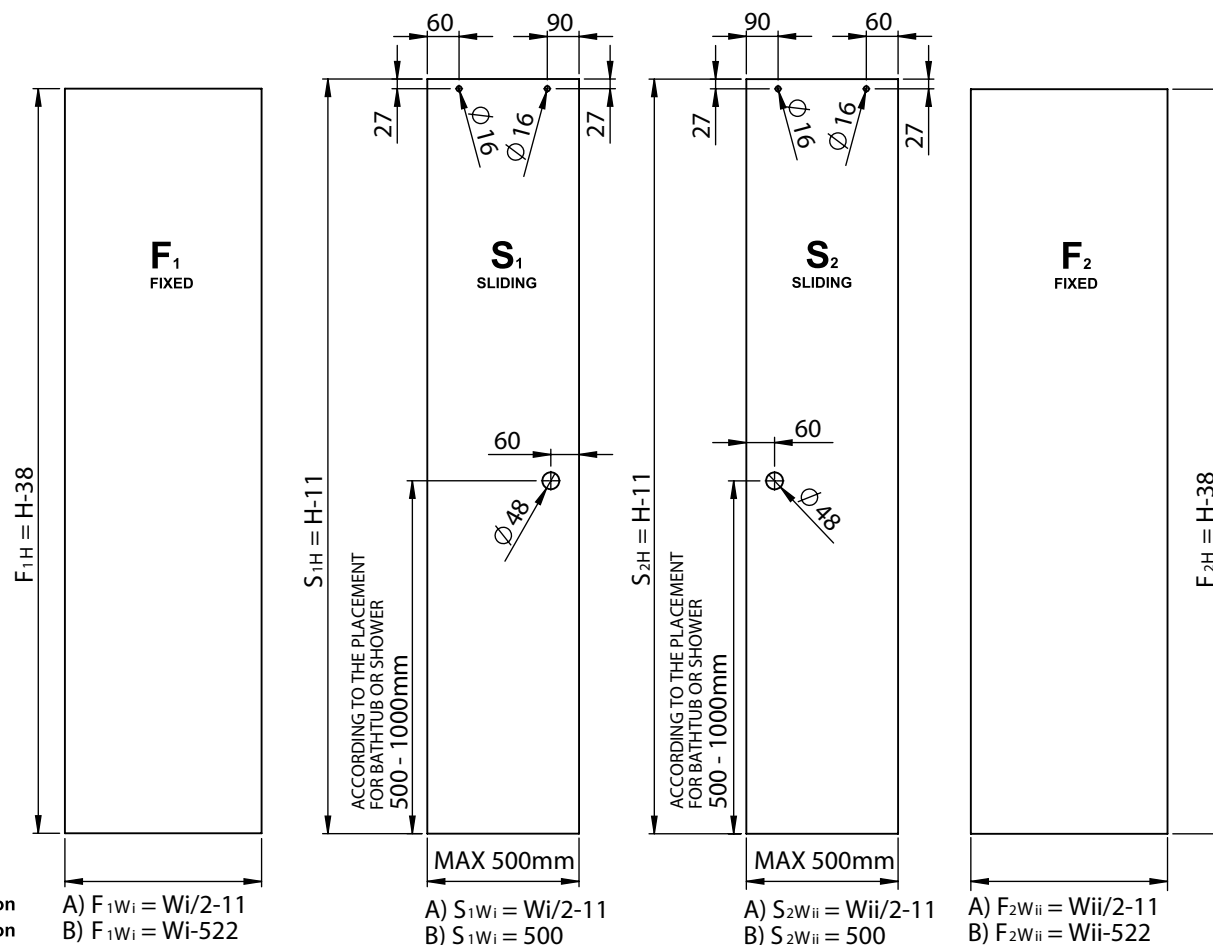
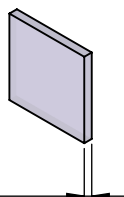


GS-R10-107-R
FOR SHOWERING SYSTEM WITH LEFT
SUPPORT CORNER USE THE ACCESSORY
WITH CODE GS-R10-107-L.



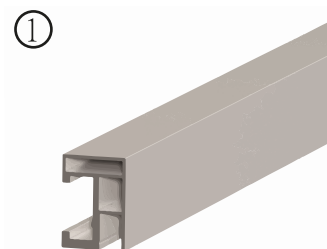
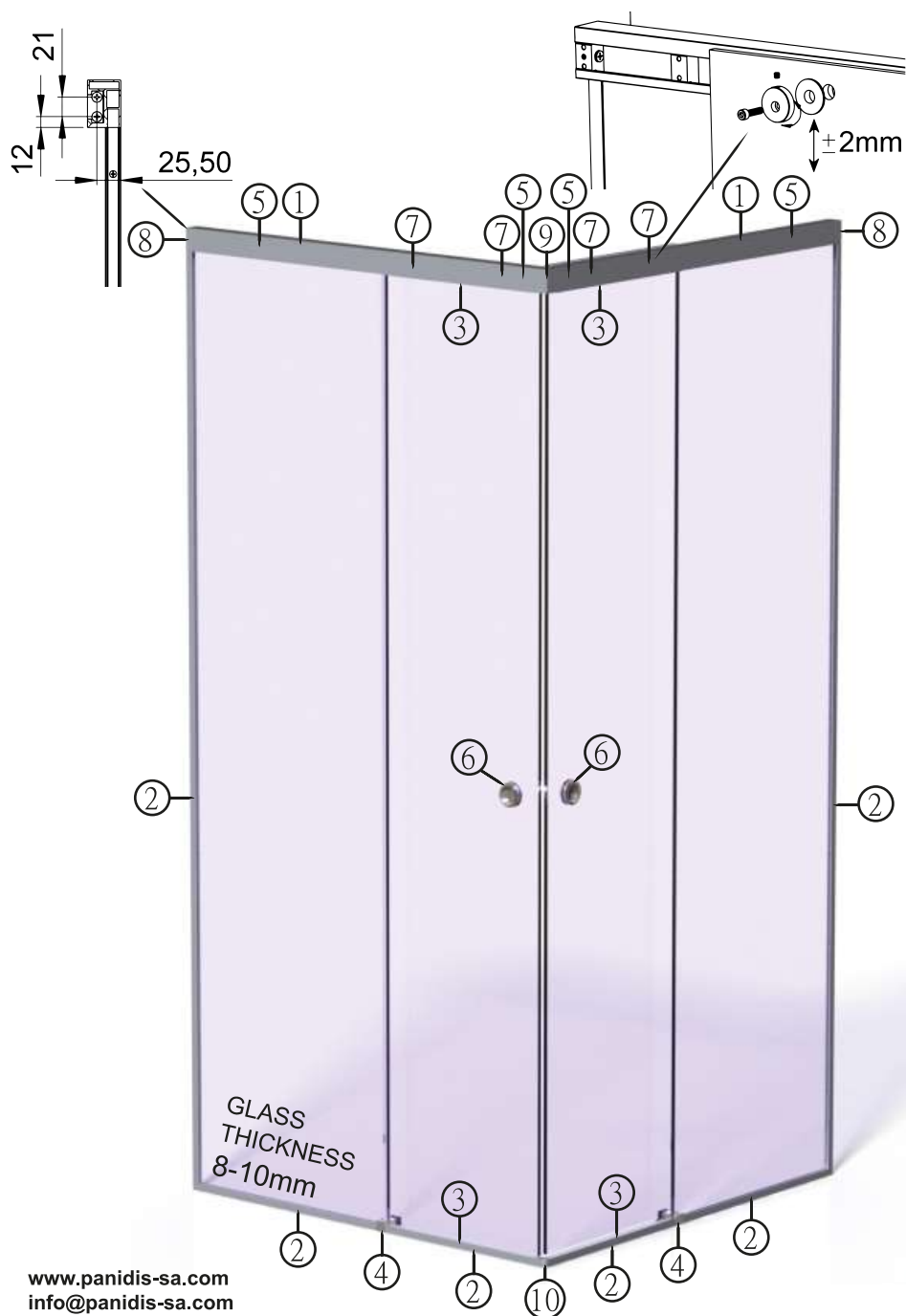
If $W < 1020$ use **A** calculation
If $W > 1020$ use **B** calculation

GLASS
THICKNESS
8-10mm



IMPORTANT INSTRUCTIONS

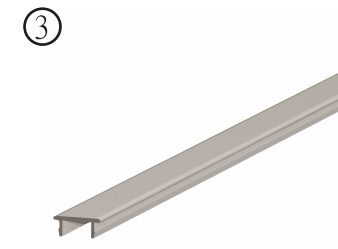
- The gaps have already computed in given dimensions. The glass have space 5mm from the wall and 3mm from the frame.
- Install the silicon sealants to the required edges according to the glass thickness.
- If the glass will ordered with processed surface, careful about the correct side of glass.
- The installation of the showering system require leveled walls and floor.



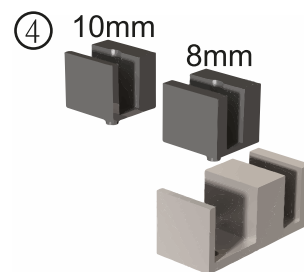
2 x GS-R10-101



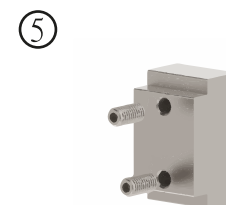
6 x GS-R10-106



4 x GS-R10-105



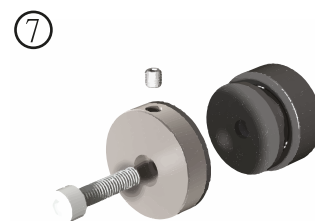
2 x GS-R10-400



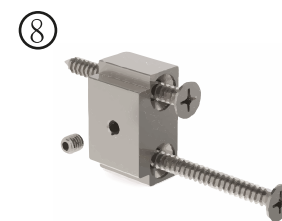
4 x GS-R10-104



2 x GS-R15



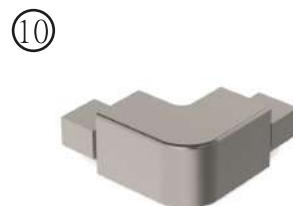
4 x GS-R10-200



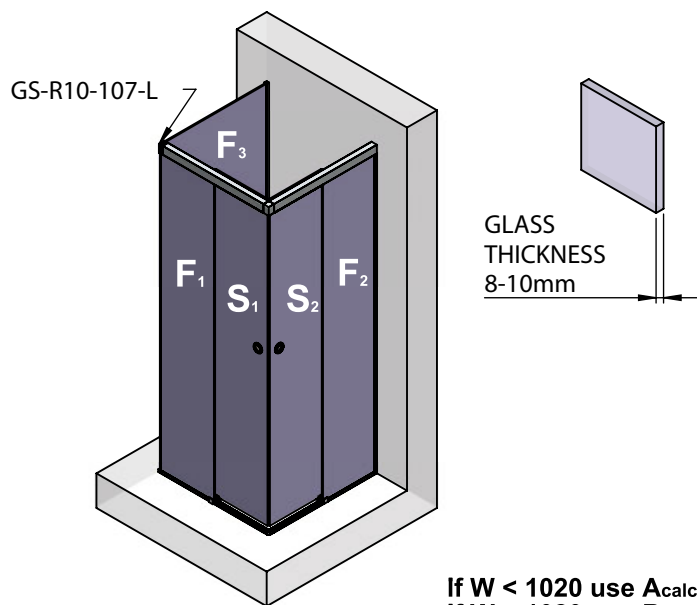
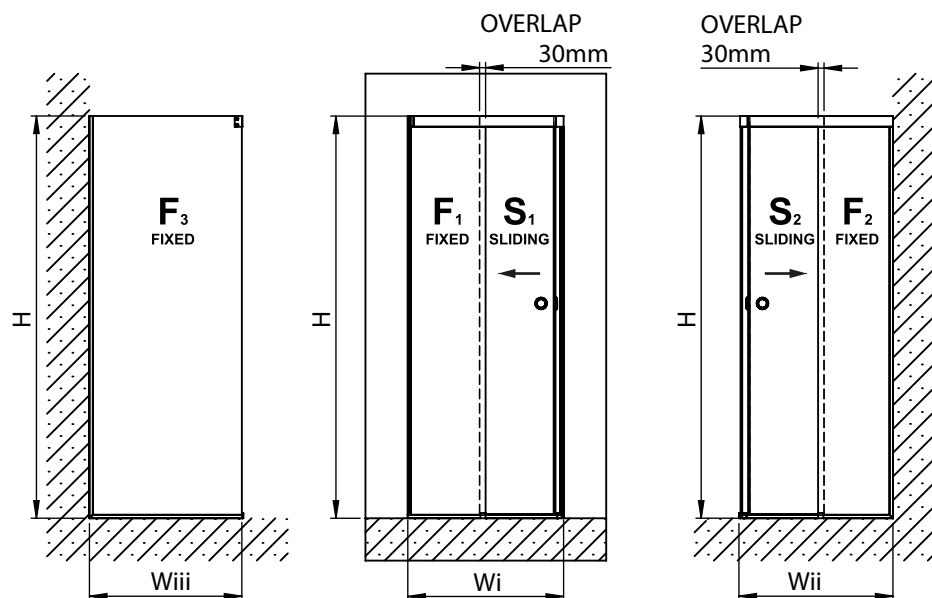
2 x GS-R10-110



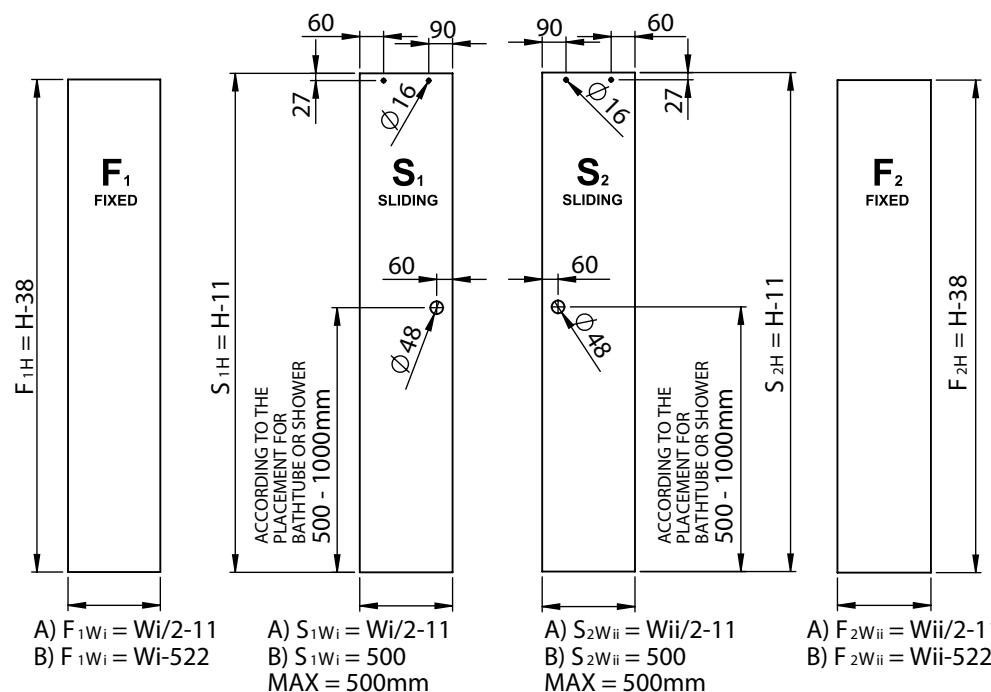
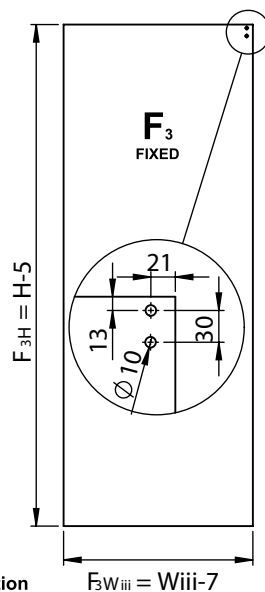
GS-R10-109



GS-R10-113



If $W < 1020$ use A calculation
If $W > 1020$ use B calculation

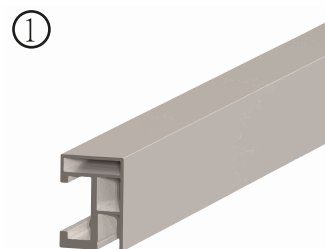
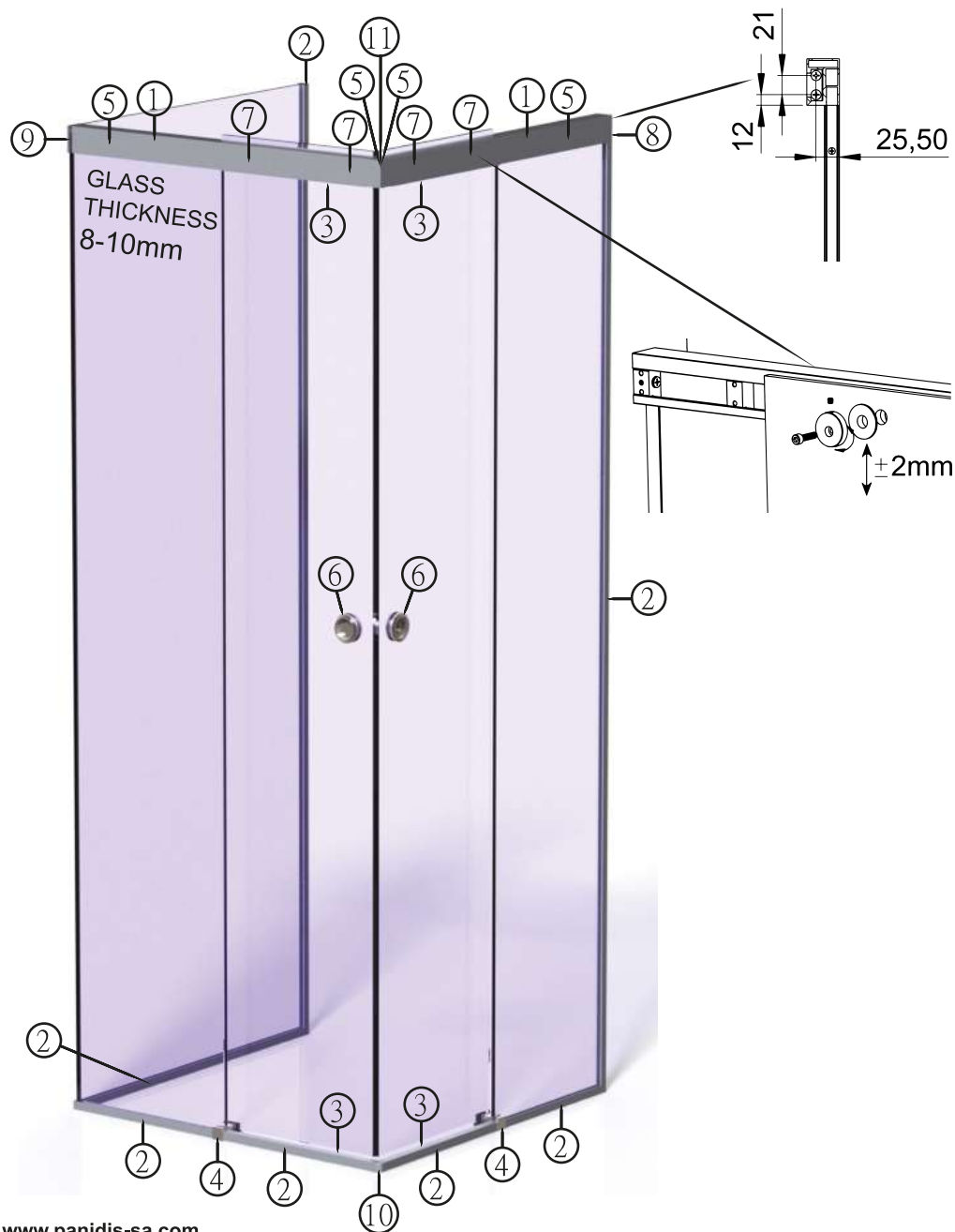


IMPORTANT INSTRUCTIONS

- The gaps have already computed in given dimensions. The glass have space 5mm from the wall and 3mm from the frame.
- Install the silicon sealants to the required edges according to the glass thickness.
- If the glass will ordered with processed surface, careful about the correct side of glass.
- The installation of the showering system require leveled walls and floor.
- Careful about left or right array of the showering system and install the corresponding corner accessory with code GS-R10-107-L or GS-R10-107-R.

Shower system in three sided, with two sliding doors and three fixed glass panels.

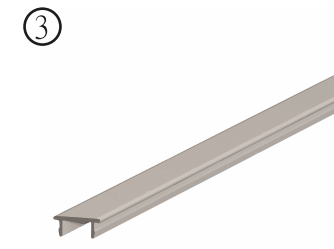
GS-R13



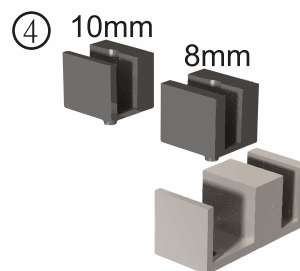
2 x GS-R10-101



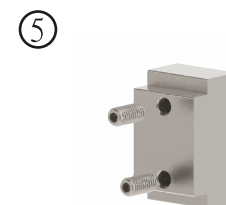
7 x GS-R10-106



4 x GS-R10-105



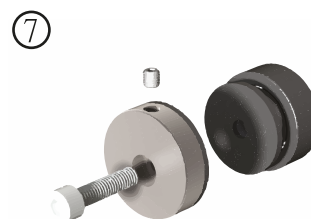
2 x GS-R10-400



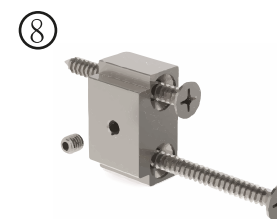
4 x GS-R10-104



2 x GS-R15



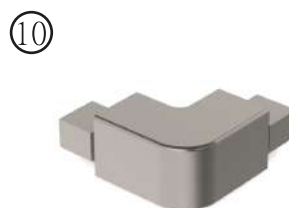
4 x GS-R10-200



GS-R10-110



GS-R10-107-L
FOR SHOWERING SYSTEM WITH RIGHT
SUPPORT CORNER USE THE ACCESSORY
WITH CODE GS-R10-107 R.



GS-R10-113



GS-R10-109

TYPE	CODE	GS-R10	GS-R11	GS-R12	GS-R13
PROFILE*					
MAIN PROFILE	GS-R10-101	x (1) pcs.	x (1) pcs.	x (2) pcs.	x (2) pcs.
U-SHAPE PROFILE	GS-R10-106	x (3) pcs.	x (5) pcs.	x (6) pcs.	x (7) pcs.
COVER PROFILE	GS-R10-105	x (2) pcs.	x (2) pcs.	x (4) pcs.	x (4) pcs.
KIT				2 x KIT**	
STOPPER	GS-R10-104	x (2) pcs.	x (2) pcs.	x (4) pcs.	x (4) pcs.
WALL MOUNT	GS-R10-110	x (2) pcs.	x (1) pcs.	x (2) pcs.	x (1) pcs.
ROLLER	GS-R10-200	x (2) pcs.	x (2) pcs.	x (4) pcs.	x (4) pcs.
PULL HANDLE	GS-R15	x (1) pcs.	x (1) pcs.	x (2) pcs.	x (2) pcs.
FLOOR GUIDE	GR-R10-400	x (1) pcs.	x (1) pcs.	x (2) pcs.	x (2) pcs.
CORNER PARTS***					
FIXED GLASS SUPPORT CORNER LEFT OR RIGHT	GS-R10-107 L / R	-	x (1) pcs.	-	x (1) pcs.
MAIN PROFILE CORNER	GS-R10-109	-	-	x (1) pcs.	x (1) pcs.
U-SHAPE PROFILE CORNER	GS-R10-113	-	-	x (1) pcs.	x (1) pcs.

* YOU NEED TO CUT EACH RAIL PROFILE TO SMALLER PIECES.

** FOR GS-R12 & GS-R13 NEED TO ORDER 2 x INSTALLATION KIT.

*** FOR GS-R11, GS-R12 & GS-R13 NEED TO ORDER CORNER PARTS. CORNER PART GS-R10-107 IS NOT REVERSIBLE.