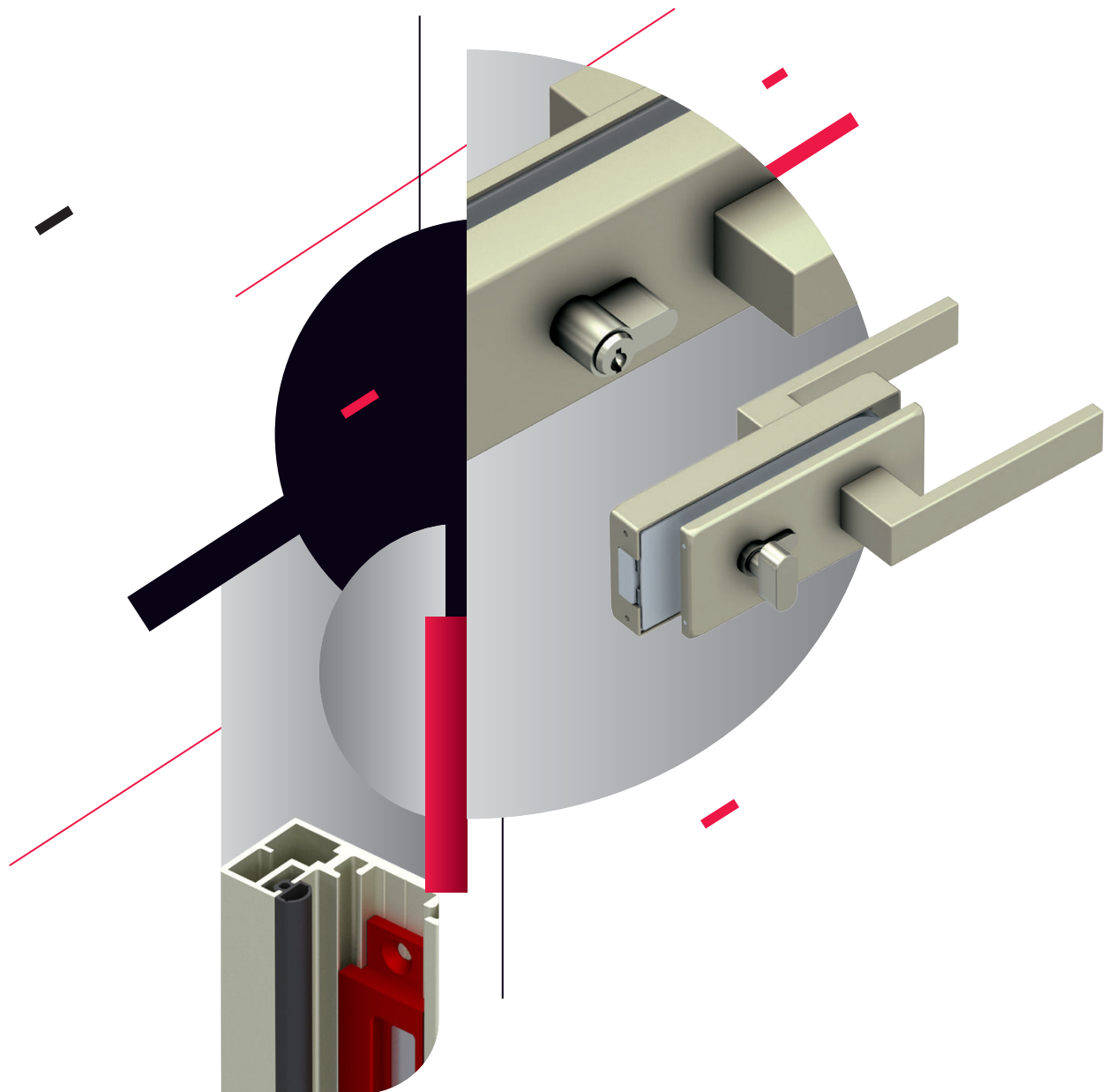


ALUMINIUM PROFILE  
GLASS DOOR MINIMAL  
FRAME SYSTEM



[WWW.PANIDIS-SA.COM](http://WWW.PANIDIS-SA.COM)

PANIDIS

MAKEDONIKI • ALUMINIUM SYSTEM COMPONENTS







## GF-10 Minimal System

**PANIDIS S.A.** presents for the first time an aluminium profile glass door frame.

Technically advanced and aesthetically flawless in their design, with an anodized finish or powder coating in a number of shades, the new system is manufactured with top quality materials and stands out for the incredible reliability and functionality that offers. In combination with its design's clever innovations, contributing to a reduction of stock and securing

flexible, easy, and fast manufacturing, without causing wear and aesthetic imperfections in the frame, the new system is the ideal choice for installation in residential or professional spaces.

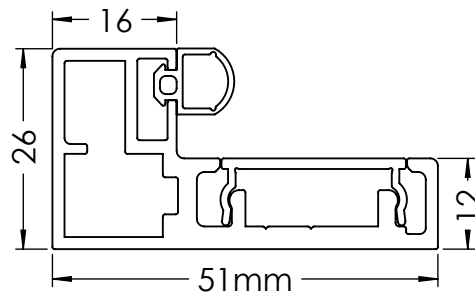




## GF-10-M

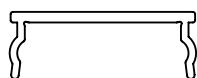
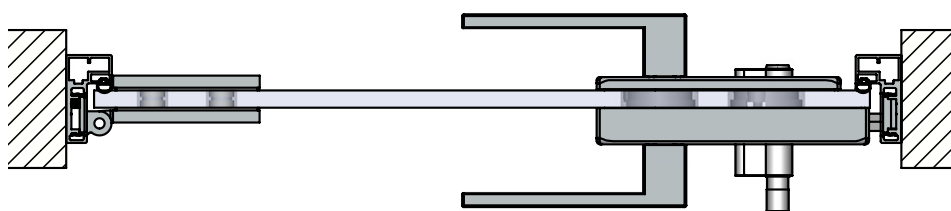
### ALUMINIUM PROFILE FRAME

- Aluminium profile frame for glass doors. The frame is manufactured from 2 aluminium profiles, each 5.5 meters in length, resulting in a reduction of stock required and limiting wear to the materials.
- The aluminium profiles are available in many choices of finish: natural anodized, satiné (inox look) anodized, black anodized, or powder coating in a selection of shades from the RAL palette.
- The frame is easily and quickly installed, it harmoniously encases the base and creates an aesthetically flawless result.
- Also available with installation of glass panels ranging from 8mm to 10mm in thickness.
- The lock nest is placed flush in a special channel of the frame, without making it necessary to predetermine which way the door will open, and without requiring processing of the frame (cutting), which causes wear and aesthetic imperfections.

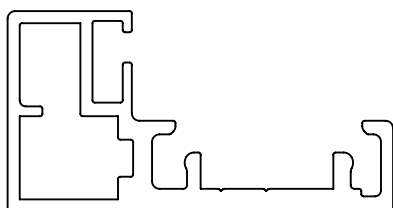




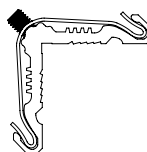
- By placing the bases of the hinges in the specially formed channel of the frame, the channel acts as a guide for easy, quick, and correct door placement.
- Connection corners are contained, for a more rigid and sturdier application on corners.
- Contains a rubber sealant that absorbs vibrations when the door is shut, decreases noise, and reduces odours and heat loss. Immediate delivery (includes full technical manual) and technical support option available.



GF-10-2  
frame cover



GF-10-7  
frame profile



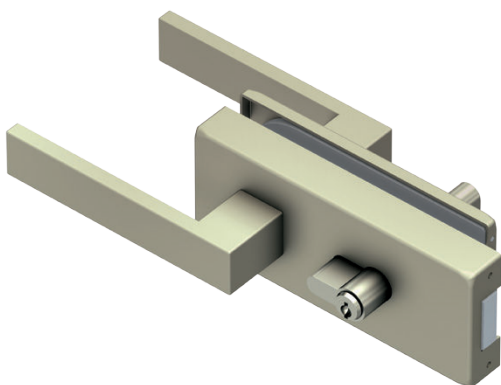
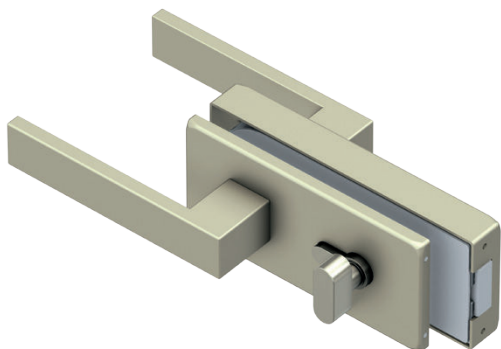
GF-10-09  
connection  
corner



GF-10-10  
clamp rubber  
for 10mm glass panels



GF-10-8  
clamp rubber  
for 8mm glass panels



## GL-100 MAGNETIC LOCK

- Flawless minimal aesthetic design and ergonomic handle.
- Glass thickness range from 8mm to 12mm.
- Available for glass, wall and aluminium profiles.
- The magnetic latch offers silent operation and minimizes vibrations when shutting the door.
- When locked in the open position, the latch is deactivated, preventing from people becoming trapped in non-accessible areas, breaking of the glass panes, and wear to the mechanism's parts.
- It is placed on doors opening to the left or to the right, and the internal body of the mechanism is easily adapted, distinctly reducing the amount of stock.
- The latch counterpart is installed in a specially formed channel in the frame using screws, which are completely covered by the frame casing.
- Available with cylinder selection:  
key - key / key - thumbturn / thumbturn - coinlatch.
- Ideal fitting for all kinds of internal doors and WC doors.
- Available in many finishing options: natural anodized, satiné (inox look) anodized, black anodized, or powder coating in a selection of shades from the RAL palette.



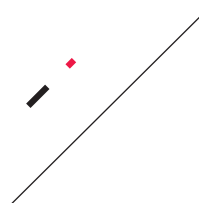
key - key

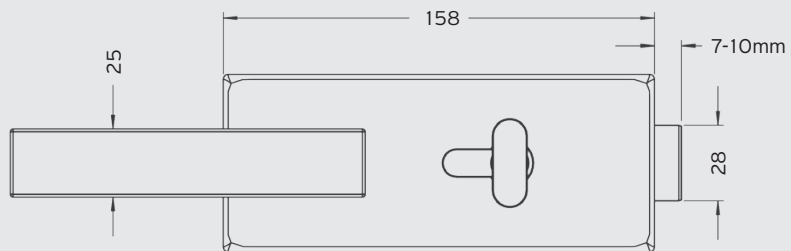
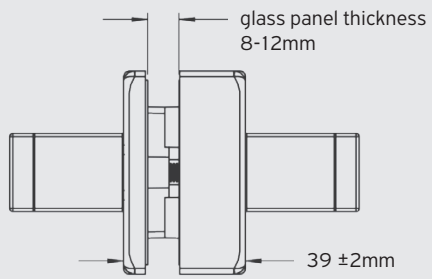
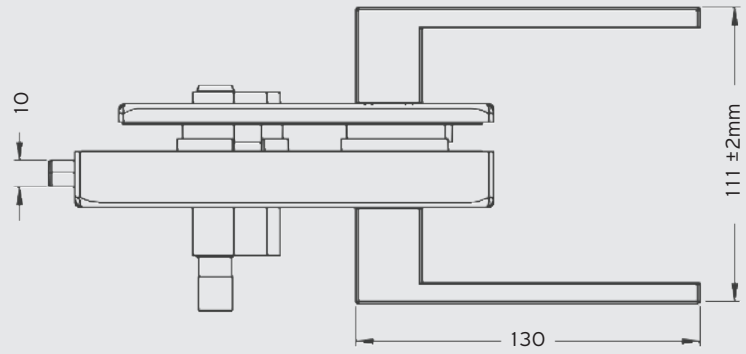


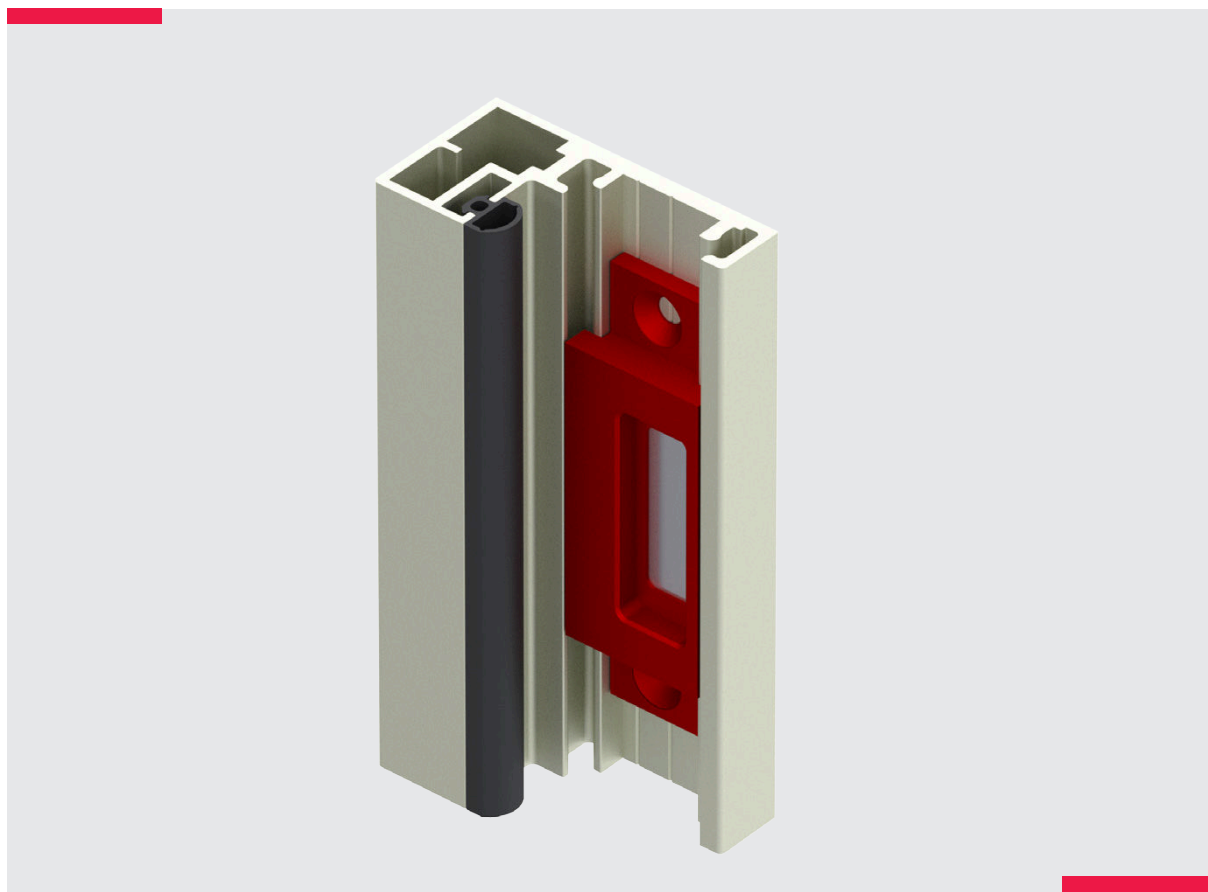
thumbturn - key



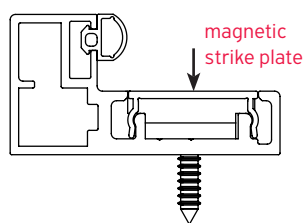
thumbturn - coinlatch







GL-102  
magnetic  
strike plate



### GL-102 MAGNETIC STRIKE PLATE

- 
- It is placed in a specially formed channel in the frame.
- No need to select a predetermined direction of door opening.
- No need for extra work (cutting) on the frame. This eliminating damages and aesthetic imperfections.
- Easy and fast installation, significantly reducing the total installation time of the frame.

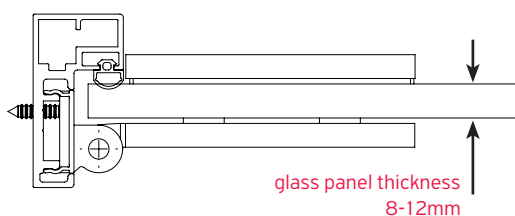
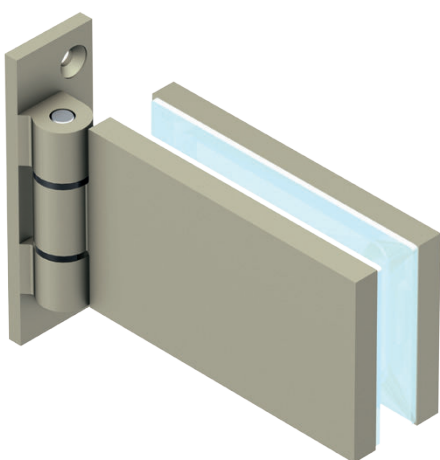
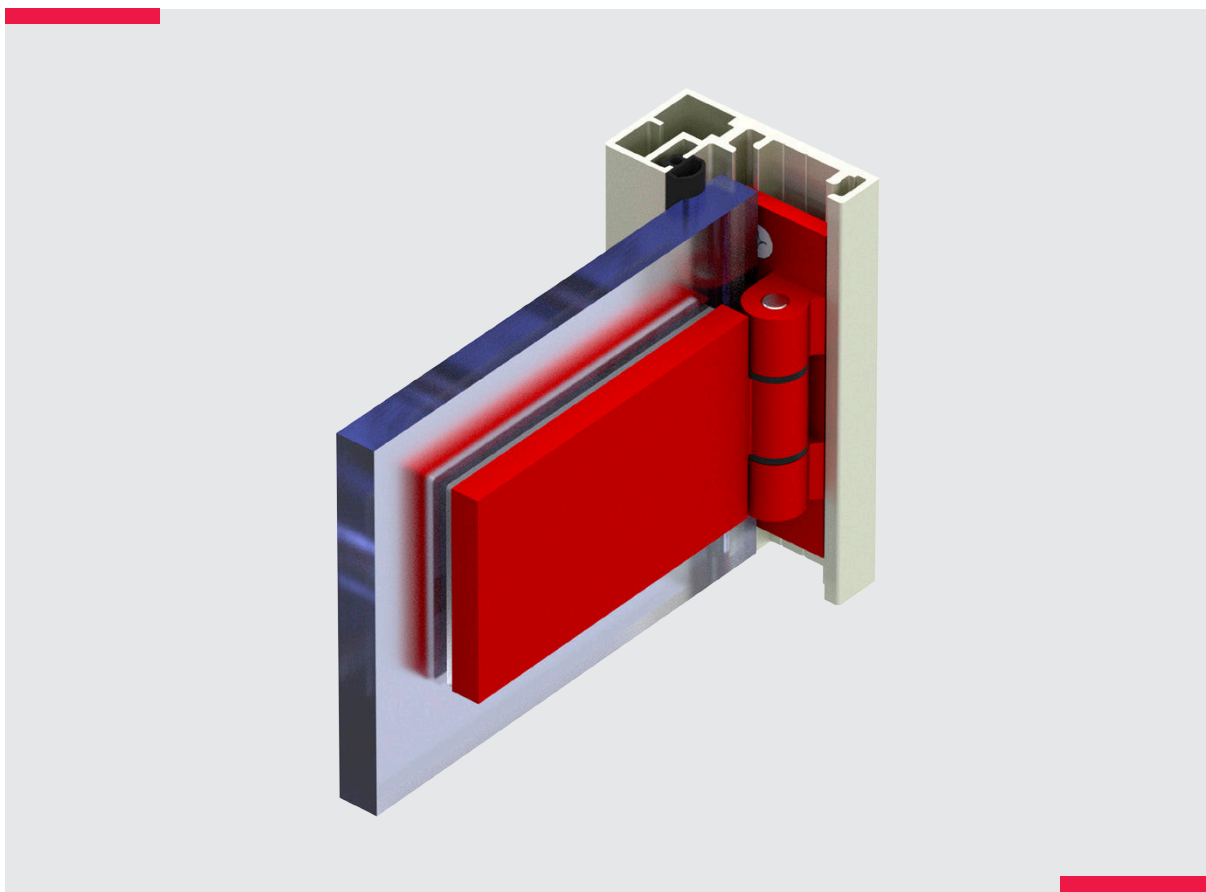


GL-104  
magnetic strike plate  
(universal)

### GL-104 MAGNETIC STRIKE PLATE (UNIVERSAL)

- 
- Designed for wall and for any type of aluminium or wooden frame.



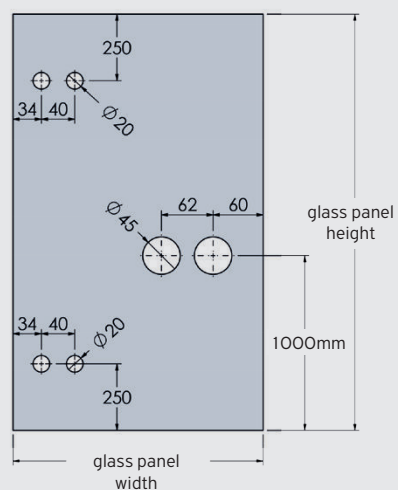
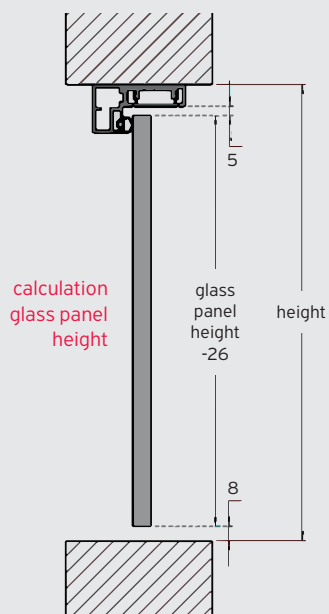
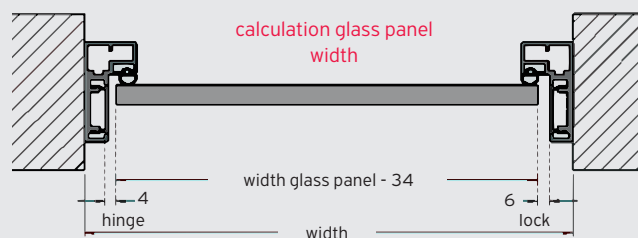


## GH-10

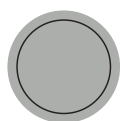
### ALUMINIUM HINGES

- Side aluminium hinge, Glass to Wall, free-movement without stop
- Glass thickness range from 8mm to 12mm.
- Maximum door width 1000mm.
- Maximum door weight 50kgr for 2 hinges, 75kgr for 3 hinges.
- Ideal for showers and interior doors installations.
- Available in Satine finish in natural, inox and black anodizing.
- RAL palette color selection.
- Suggested placement, in the specially formed channel of the aluminium frame system GF-10 / GF-10M, the channel acts as a guide for easy, quick, and correct door placement.

## CALCULATION OF GLASS PANELS



## FINISHING OPTIONS AND AVAILABLE COLORS



Natural  
anodizing



Satiné  
(inox look)  
anodizing



Black  
anodizing



Powder coating with  
color options from the  
RAL palette



**MAKEDONIKI - PANIDIS S.A.**

**Headquarters and factory**

11th km Old National Road Thessaloniki - Kilkis  
Po Box 141, P.C. 57008 Ionia, Thessaloniki, Greece

**T** 2310 780352  
2310 784519  
**F** 2310 783764  
**E** info@panidis-sa.com

**Athens branch**

38 Chr. Lada & Lisia  
P.C 12132, Peristeri, Athens, Greece

**T** 210 5155430  
210 5155439  
**F** 210 5155434  
**E** athina@panidis-sa.com

